

NEW USER INTERFACE

Information

In 2015 Release 2 the front page of the CARS and TRUCKS diagnostic software will have a new Graphical User Interface. The three current ways of selecting vehicle



(Classic mode selection, Information view (Tree) selection and History selection) will be replaced with one simplified way, which gives the user all information that is available today, when he or she needs it, and in one single flow.

Background

There are many purposes to make a new User interface generation.

- First of all we want to give our users a better experience and evolve the tools to be in line with what we get used to in everyday life, with internet experiences and smartphone apps etc.
- The performance and flow in the software will be increased to make the way to reach the desired function shorter and quicker.
- We also intend to make all functions in the diagnostic software more intuitive and more accessible.
- Last but not least a fact that is important for our sales forces; Making a major difference to the front page makes it easier to distinguish a cracked software from the genuine Autocom Diagnostic software. We see a lot of attempts to sell old versions of the diagnostic software as "the latest version". They are modifying the old version by changing splash pictures, version settings etc. This way a buyer can believe that it is the latest version even if we and you know it is not. (As you know this can't be prevented as the old versions are cracked and we have no way to control the versions released before we introduced the security dongle solution.)

Security

This new solution is created with the same focus on security as with the version 2.14.1 and onwards. The dongle is required to access 2015 Release 2 and all of the new user interface components.

What´s new? - What comes next?

This is the first step in a total rework of the diagnostic software. Our intention is to have all parts of the software in this new style, but we plan to make it in small steps to let our users get used to the news and to feel comfortable in every step.

In this phase we have reworked the vehicle selection. Classic Mode, Information view (Tree) and History are merged into one flow. The purpose is to make it quicker and also to be served the information you need, when you need it.

A great new feature that we created is the ability to set your favorite Brands. To easier access the most common brands you have in your workshop. No more scrolling through the entire list to get to Toyota or Volkswagen.

The desktop shortcut icons are refreshed to make it more in line with our product packaging profile.

All parts of the software related to the Archive menu (e.g. top list of the window) will remain exactly as they are today. Settings; Hardware setup, Language setup and Workshop info will be same as today.

From the point when the Diagnostic software and VCI are connected to the vehicle, including Reading/erasing DTC, Reading live data parameters (data lists), Adjustments and Component activation etc. will be same. ISS, Flight Recorder and Report function will remain as today.

User experience

In other words not many parts of the diagnostic software are changed, but what is changed will make a big difference for our users. Quick and easy navigation through the diagnostic software with ability to seamless use both mouse and keyboard. Less "click" to read-out or OBD-functions. Another great news is the visibility of ISI (Intelligent System Identification) to make the users notify the built in feature. The continuous enhancement of ISI functionality across the database, gives a more accurate diagnosis, but can in some cases be perceived as a limitation or loss of functionality. Our intention is to make all users confident that the obtained result is correct.

TOP NEW USER FUNCTIONS

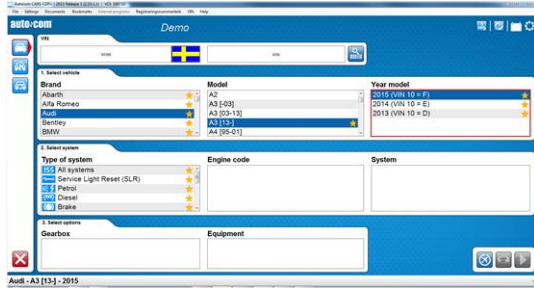
- Favourite brands
- Simplified history / Recently selected vehicles
- Better adaption to various screen resolutions
- ISI visibility
- Improved connection dialog to easier detect connection issues
- Keeping previous VIN in memory

Products

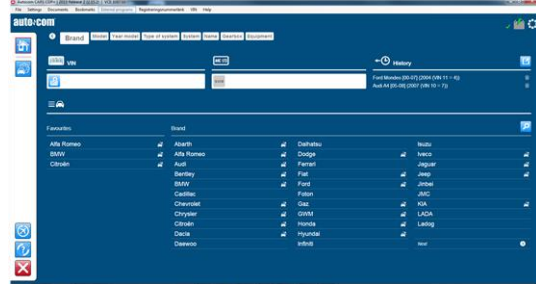
This rework will apply to CARS and TRUCKS diagnostic software. GENERIC is not affected as it has not got any vehicle selection.

Examples of transformation

Classic mode vehicle selection



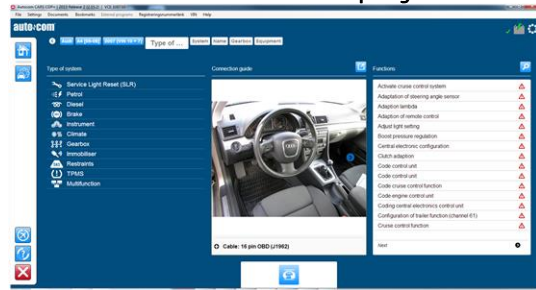
Home page of the new software



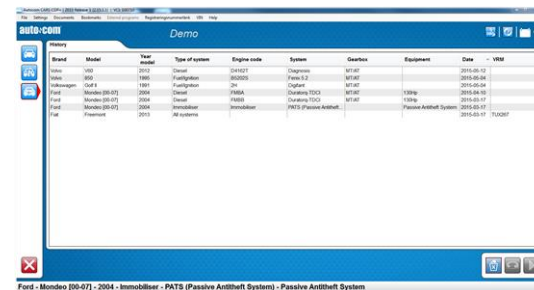
Information view (Tree) vehicle selection



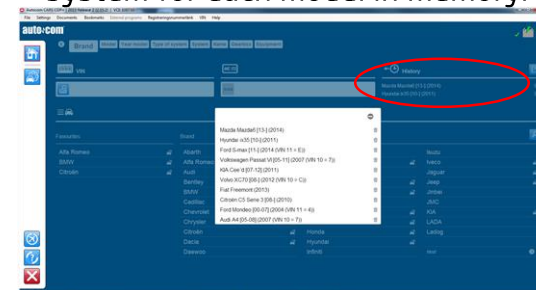
When selections of Brand, Model and Year are fulfilled, the equivalent information will be displayed.



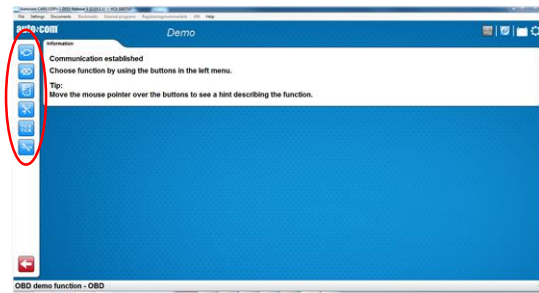
History vehicle selection



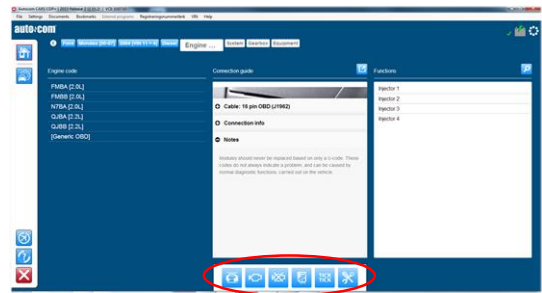
History of 10 last selected vehicles is now found in the Home page. The software keep the latest selected system for each model in memory.



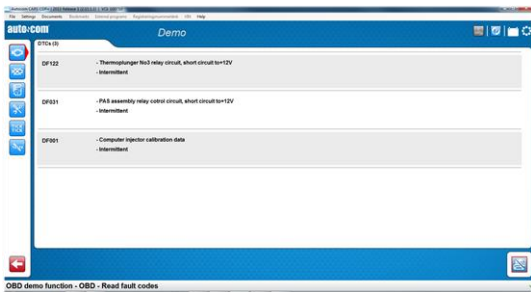
Connected to vehicle



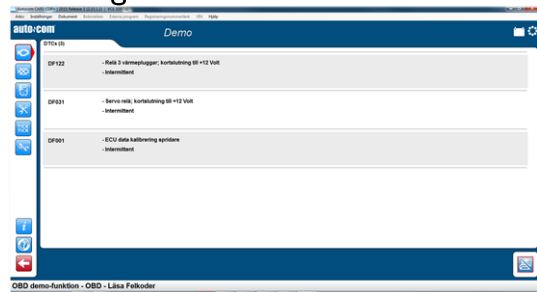
This step is not required any more. All functions are accessible directly in the vehicle selection.



Reading fault codes



Same layout, but with new background color.



Adjustment function



Same layout, but with new background color.

